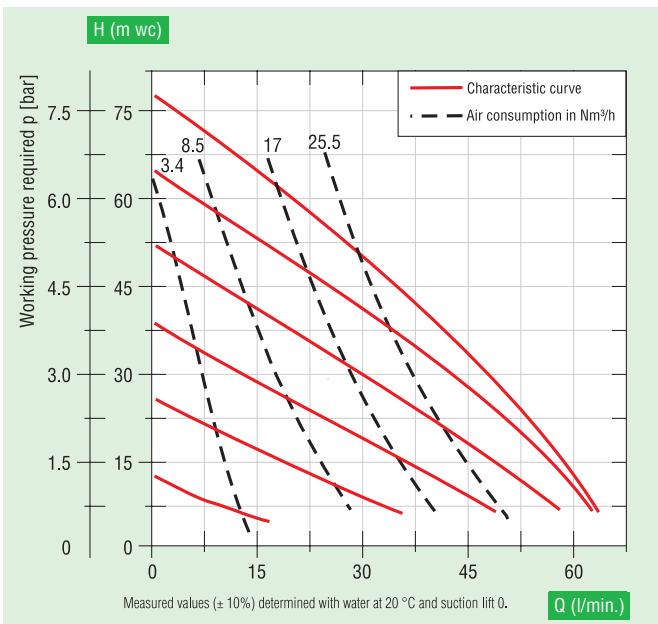
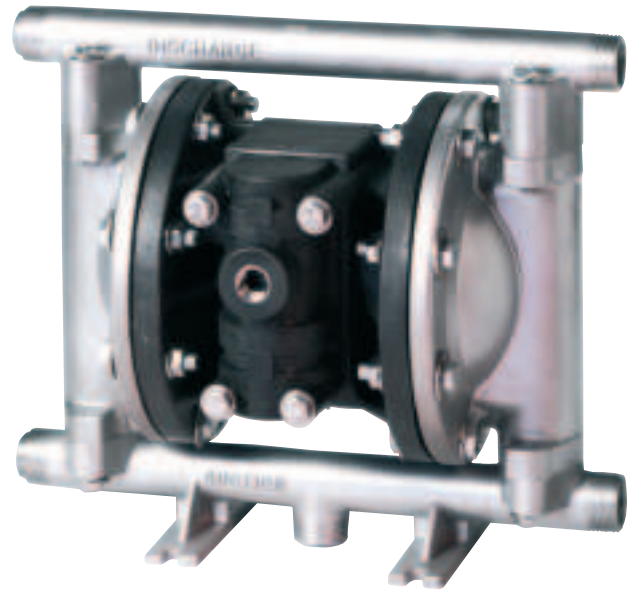


Lutz Double Diaphragm Pumps

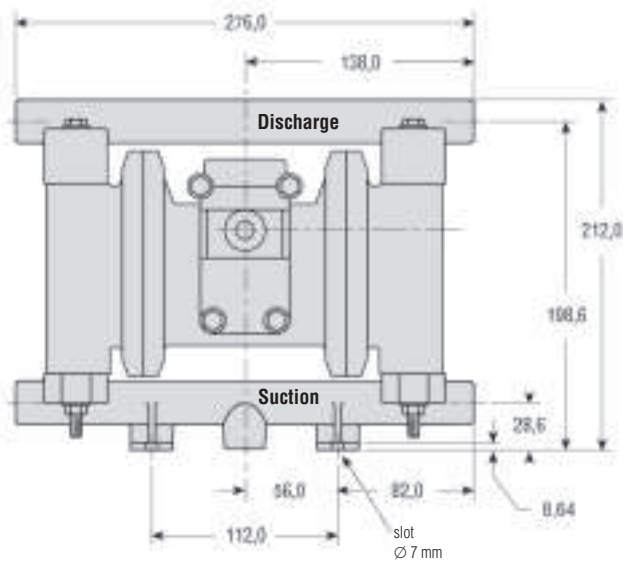
Model 1/2" Bolted Version (metallic)

Typical application:

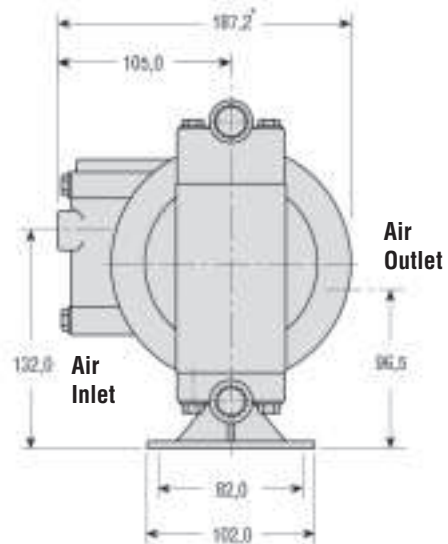
200 l-drum pumping, ink recirculation and feed, chemicals, solvents, acids, soap dispensing



Explosion proof protection
Suitable range of accessories for avoiding electrostatic charge see page 34 - 45.



Front View



Side View

* Approximate Dimension with Muffler (187.2)

Individual datasheets on request.
Dimensions in mm